

Fakulta zemědělská  
a technologická  
Faculty of Agriculture  
and Technology



Jihočeská univerzita  
v Českých Budějovicích  
University of South Bohemia  
in České Budějovice



Fakulta zemědělská  
a technologická  
Faculty of Agriculture  
and Technology

Jihočeská univerzita  
v Českých Budějovicích  
University of South Bohemia  
in České Budějovice

a tradition  
of many years

# a **MODERN** **FACULTY**

where the agricultural tradition of  
the region is combined with modern  
research of international renown.

**„We develop technologies,  
we shape nature.“**



1950

1960

1970

1980

1990

2000

2010

2020

## 1960

The faculty was founded as an independent school with the name **Faculty of Operations and Economics** under the auspices of University of Agriculture in Prague



## 1985

The name of the faculty was changed to **Faculty of Agronomy**

## 1991

The faculty was one of the founding faculties of the **University of South Bohemia in České Budějovice**



## 2016

Foundation of **Research and Educational Microbrewery**

## 2022

The name of the faculty was changed to **Faculty of Agriculture and Technology**



## 1992

The name of the faculty was changed to **Faculty of Agriculture**



Fakulta zemědělská  
a technologická  
Faculty of Agriculture  
and Technology

Jihočeská univerzita  
v Českých Budějovicích  
University of South Bohemia  
in České Budějovice



Fakulta zemědělská  
a technologická  
Faculty of Agriculture  
and Technology

Jihočeská univerzita  
v Českých Budějovicích  
University of South Bohemia  
in České Budějovice

**160** employees of the faculty

**42 %** of the employees are women

**1 100** students enrolled in all  
study programmes

**54 %** of all students are women

women belong  
in science

**GENDER  
BALANCE**





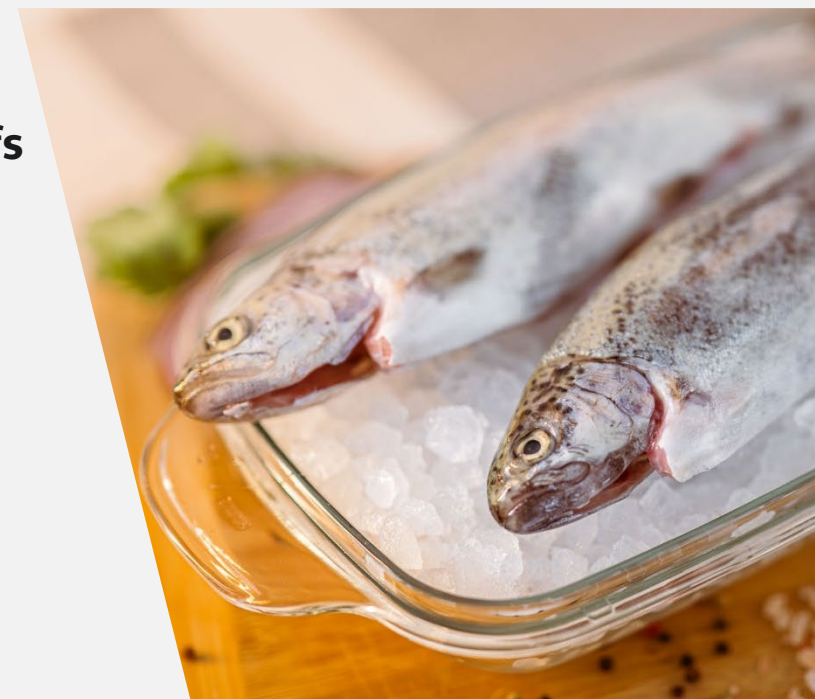
five central  
topics of

# & SCIENCE & RESEARCH

Activities of the faculty in science and research focus on the areas of agriculture, agroecology, technics and the development of new technologies, biotechnologies, chemistry, quality and processing of agricultural products or landscape management.

The faculty co-operates intensively with the business sector in the field of consultancy and contractual research.

- 1** sustainable agriculture
- 2** agricultural biotechnologies
- 3** quality of agricultural products and foodstuffs
- 4** agriculture and the environment
- 5** agriculture and technology 4.0



the five  
central topics

# SUSTAINABLE AGRICULTURE

---

**The sustainable agriculture,** the permanently sustainable agriculture, respectively, is one of the basic aims of the Common Agricultural Policy of the EU. It consists of adapting agricultural activities to sustainable management of natural resources and to respectful behaviour to the environment.



the five  
central topics

# AGRICULTURAL BIOTECHNOLOGIES

Biotechnologies are a modern, intensively developing field of study, combining biology with technologies and offering a great opportunity to innovations.

**Agricultural biotechnologies**, referred to as "green" biotechnologies are biotechnological methods and procedures applied to agricultural processes.



the five  
central topics

# QUALITY of AGRICULTURAL PRODUCTS and FOODSTUFFS

The protection of quality of foodstuffs and of health is one of the main aims of the Common Agricultural Policy of the EU.

**The quality of agricultural products** yields to many characteristics of quality, be it chemical composition or nutritional, microbiological, hygienic and sensory properties



Fakulta zemědělská  
a technologická  
Faculty of Agriculture  
and Technology

Jihočeská univerzita  
v Českých Budějovicích  
University of South Bohemia  
in České Budějovice



the five  
central topics

# AGRICULTURE and the ENVIRONMENT

The agriculture has ever since been connected to the **environment**.

The agriculture is based on the usage of natural resources on the one hand, on the other hand it is a human activity shaping the environment. The human agricultural activity in the landscape has an impact on almost all parts of the environment.



Fakulta zemědělská  
a technologická  
Faculty of Agriculture  
and Technology

Jihočeská univerzita  
v Českých Budějovicích  
University of South Bohemia  
in České Budějovice

the five  
central topics

# AGRICULTURE and TECHNOLOGY 4.0

**Agriculture and technology 4.0** is a general designation for a concept based on application of modern digital methods in agriculture and in related applied sciences.

The new, so-called cyber-physical systems can develop due to technological progress, offering farmers new possibilities.





Fakulta zemědělská  
a technologická  
Faculty of Agriculture  
and Technology

Jihočeská univerzita  
v Českých Budějovicích  
University of South Bohemia  
in České Budějovice

applied research

# RESEARCH ACTIVITY

The faculty co-operates intensively with the business sector in the field of consultancy and contractual research.

The FAT USB therefore focuses most of its research activities to **applied research** making thus a significant contribution to society



co-operation with  
partners from practice

# SOME of our PARTNERS

- ❖ AGRICO s.r.o.
- ❖ AGRIO MZS s.r.o.
- ❖ Agro, družstvo Záhoří
- ❖ Agrokomplex Šumava s.r.o.
- ❖ AGROSOFT Tábor, s.r.o.
- ❖ Arpida, centrum pro rehabilitaci osob se zdravotním postižením, z.ú.
- ❖ BEMAGRO s.r.o.
- ❖ ČESKÉ HOUBY a.s.
- ❖ DeLaval s.r.o.
- ❖ ENGEL Strojírenská spol. s r.o.
- ❖ Farma Otročin, s.r.o.
- ❖ GARNEA, a.s.
- ❖ HERBAVITA CZ s.r.o.
- ❖ Lesy a rybníky města České Budějovice s.r.o.
- ❖ Meclovská zemědělská a.s.
- ❖ Ministerstvo zemědělství České republiky
- ❖ Prima Agri PT a.s.
- ❖ TERMS a.s.
- ❖ Výrobně obchodní družstvo Kadov
- ❖ Zemědělské družstvo Novosedly
- ❖ Zemědělské služby Dynín
- ❖ Zemko Kožlí, a.s.

and many others...





Fakulta zemědělská  
a technologická  
Faculty of Agriculture  
and Technology

Jihočeská univerzita  
v Českých Budějovicích  
University of South Bohemia  
in České Budějovice



## ČTYRÁK UNIVERSITY BREWERY

Research and educational microbrewery of the Faculty of Agriculture and Technology of USB was founded in **May 2016**.

It aims not only at providing academic beer for the neighbourhood but also at fostering research and education in the field of brewing beer. The brewery also uses for its research activity the national brewery Budějovický Budvar.

# The **DRONE** **CENTRE**

---

The Faculty of Agriculture and Technology applies self-flying planes, the so-called drones since 2015. These are used not only in science but are also used by volunteers for field work and monitoring.

Our employees save animals from harvesting machines when fields and meadows are being mown.



Fakulta zemědělská  
a technologická  
Faculty of Agriculture  
and Technology

Jihočeská univerzita  
v Českých Budějovicích  
University of South Bohemia  
in České Budějovice



**INTERNATIONAL  
EDUCATIONAL  
and RESEARCH CENTRE  
of the COMPANY DeLaval**

The international educational and research centre of the company DeLaval is focused on the **automated milking of cows.**

The centre is situated in the campus of USB and it is equipped with a milking robot VMS, cca. 3 million CZK worth, which has been lent by the company for the needs of the faculty.



**CENTRE** for the  
**BEST AVAILABLE  
TECHNOLOGIES**  
for **INTENSIVE LIVESTOCK PRODUCTION**

New **BAT technologies** in the field of protection of air, wastewater processing, processing of excrements of farm animals up to their ploughing in soil are being tested in the centre.



Fakulta zemědělská  
a technologická  
Faculty of Agriculture  
and Technology

Jihočeská univerzita  
v Českých Budějovicích  
University of South Bohemia  
in České Budějovice





# LABORATORY of LIFE CYCLE ASSESSMENT

LCA studies can serve as a tool for **reducing the environmental impact** of companies, as motivational aspects in communication with the customer, as motivational tools for environmental policy (e.g., agriculture), for increasing competitiveness, or for development and research.

With the help of LCA, it is possible to compare the environmental impacts of products with regard to their function or evaluate the environmental impacts with respect to the entire product life cycle.





Fakulta zemědělská  
a technologická  
Faculty of Agriculture  
and Technology

Jihočeská univerzita  
v Českých Budějovicích  
University of South Bohemia  
in České Budějovice



**7** bachelor  
study programmes

**6** postgraduate master  
study programmes

**5** doctoral  
study programmes

**+** many courses  
of lifelong learning

studying  
at the faculty

# EDUCATION

The faculty has brought up  
thousands of professionals  
practicing in agriculture, state  
administration or academic sphere.





## BACHELOR

Agribusiness  
Agricultural Biotechnology  
Agricultural Machinery and Technology  
Agriculture  
Agroecology  
Animal Husbandry  
Land Adjustment and Real Estate Trade

## POSTGRADUATE MASTER

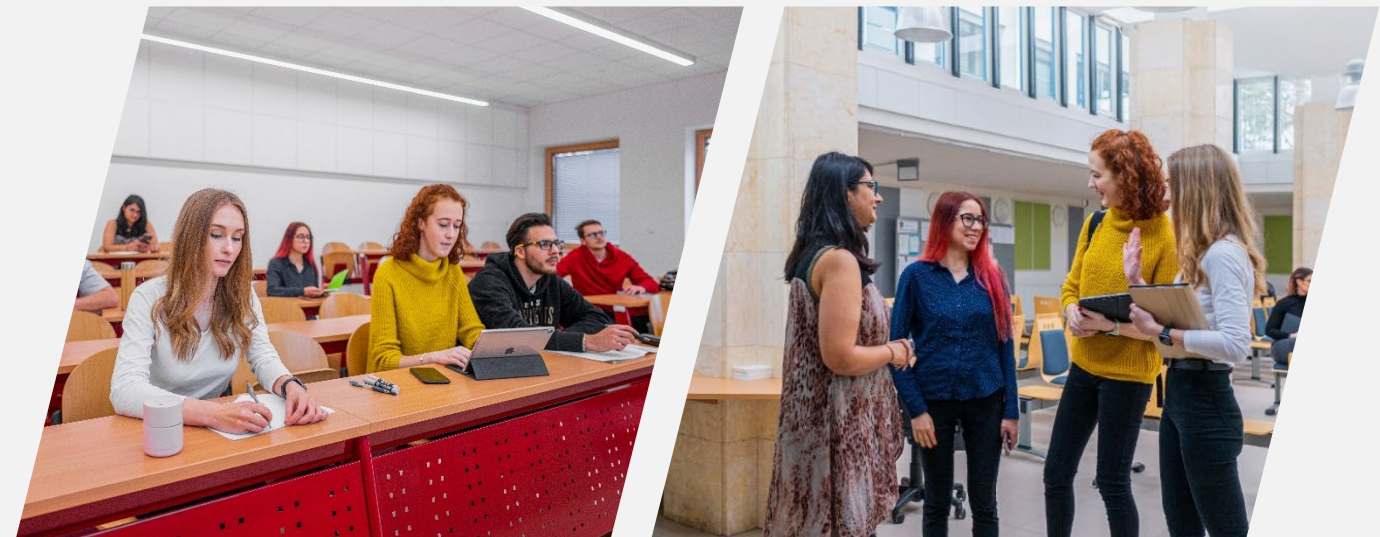
Agricultural Biotechnology  
Agricultural Machinery and Technology  
Agroecology  
Animal Husbandry  
Multifunctional Agriculture (in English)  
Quality and Processing of Agricultural Products

## DOCTORAL (in English)

Agricultural Chemistry and Biotechnology  
Agroecology and Applied Ecology  
General Animal Husbandry  
Plant Science  
Smart Agriculture and Technology 4.0

study  
programmes

# EDUCATION





Fakulta zemědělská  
a technologická  
Faculty of Agriculture  
and Technology

Jihočeská univerzita  
v Českých Budějovicích  
University of South Bohemia  
in České Budějovice

**660** students in bachelor  
study programmes

**320** students in postgraduate  
master study programmes


**120** students in doctoral  
study programmes

**47%** of successfully completed  
studies at the faculty

numbers  
of students

# EDUCATION





Let's discover  
the world together

## INTERNATIONAL COOPERATION

---

The FAT USB has been taking part in research in co-operation with other research departments all over the world in recent years.

The international co-operation networks established by the FAT provides students with the opportunity to travel to **research workplaces of excellence** in interesting destinations where they can further foster their knowledge and skills.





Fakulta zemědělská  
a technologická  
Faculty of Agriculture  
and Technology

Jihočeská univerzita  
v Českých Budějovicích  
University of South Bohemia  
in České Budějovice

meet

# FACULTY MANAGEMENT



**doc. RNDr. Petr Bartoš, Ph.D.**  
dean of the faculty



**Ing. Mgr. Pavel Olšan, Ph.D.**  
vice-dean  
for international relations



**doc. Ing. Jan Bárta, Ph.D.**  
vice-dean  
for science and research



**Ing. Andrea Bohatá, Ph.D.**  
vice-dean  
for accreditations and quality management



**Dr. Ing. Jaromír Kadlec**  
vice-dean  
for student affairs



Fakulta zemědělská  
a technologická  
Faculty of Agriculture  
and Technology

Jihočeská univerzita  
v Českých Budějovicích  
University of South Bohemia  
in České Budějovice

Are you interested  
in more detail?

**GET** in  
**TOUCH** 

University of South Bohemia in České Budějovice  
Faculty of Agriculture and Technology  
Studentská 1668  
370 05 České Budějovice  
Czech Republic

**Dean's Secretariat** | Šárka Střobová  
Tel.: +420 387 772 427 | E-mail: [strobova@fzt.jcu.cz](mailto:strobova@fzt.jcu.cz)

**International Relations Office** | Mgr. Lucie Káplová  
Tel.: +420 387 772 638 | E-mail: [kaplova@fzt.jcu.cz](mailto:kaplova@fzt.jcu.cz)



@fztju

[www.fzt.jcu.cz](http://www.fzt.jcu.cz)